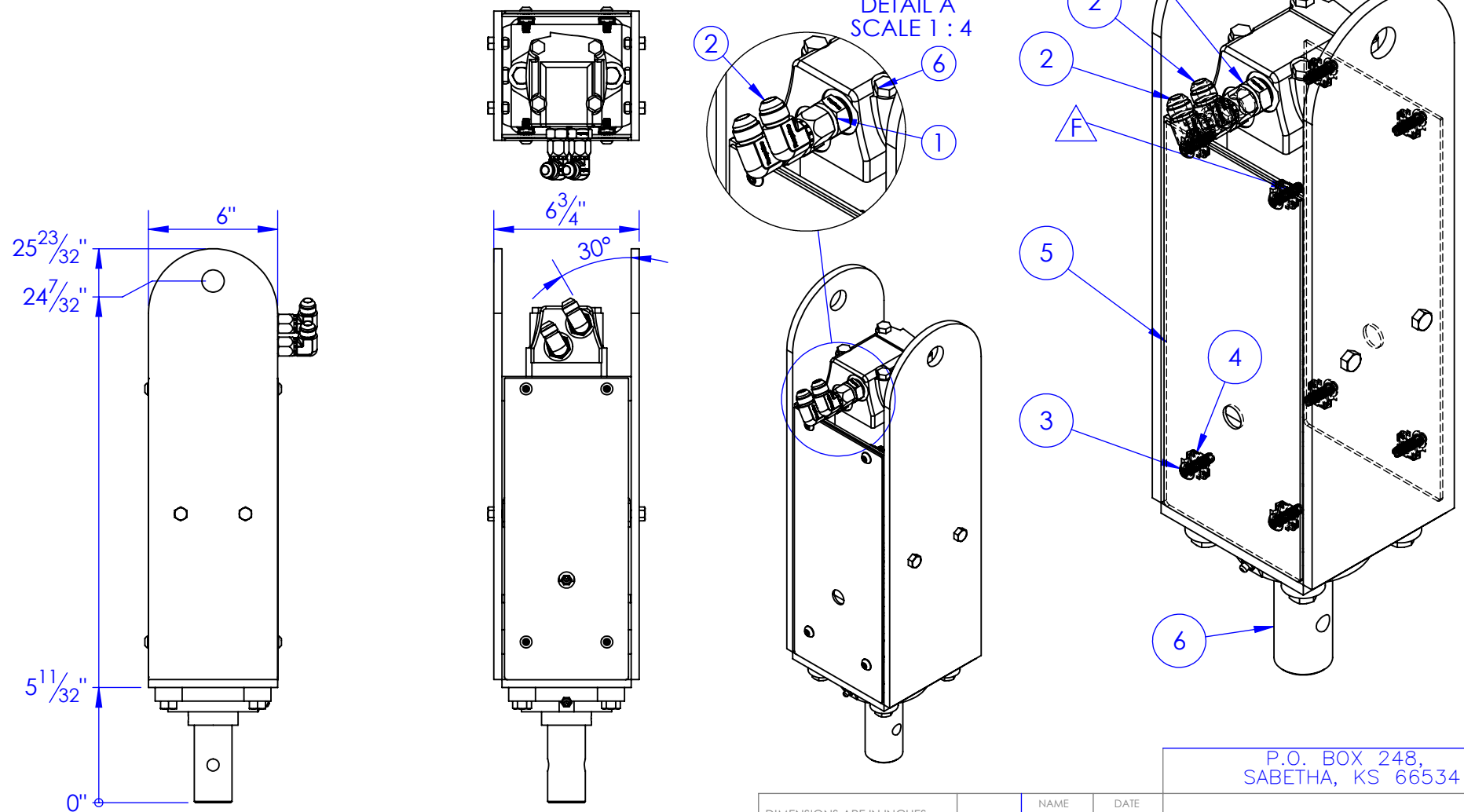


ITEM NO.	PART NUMBER	DESCRIPTION	DRAWING #	QTY.
1	AD-6400 8-10	8MJx10MB	PURCHASED	2
2	AD-6500-8-8	8MJ x 8FJ 90, ADAPTER	PURCHASED	2
3	BO-5/16x1 BHCS SS	5/16 SS BUTTON HD BOLT 1"	STOCK	8
4	BO-5/16 CLIP IN NUT	CLIP-ON NUT 5/16"	STOCK	8
5	FP-PHD2-7	POWER HEAD COVER, PHD	60-2106	2
6	PHD2-12	HYDRA-PHD. ASSEMBLY, PREPAINT	60-0103	1

REV.	REVISIONS DESCRIPTION	DATE	APPROVED
F	REVISED TO CLIP NUTS	9/5/2012	
G	UPDATED VIEW w/OUT NOTCHES	6/25/2022	HP



PROPRIETARY AND CONFIDENTIAL
 THE INFORMATION CONTAINED IN THIS
 DRAWING IS THE SOLE PROPERTY OF TRIPLE
 C INC. ANY REPRODUCTION IN PART OR
 AS A WHOLE WITHOUT THE WRITTEN
 PERMISSION OF TRIPLE C INC. IS PROHIBITED.

DIMENSIONS ARE IN INCHES
 TOLERANCES:
 FRACTIONAL $\pm 1/16$
 ANGULAR: MACH ± 1 BEND \pm
 TWO PLACE DECIMAL ± 010
 THREE PLACE DECIMAL ± 005

MATERIAL ---
 DO NOT SCALE DRAWING

NAME	DATE
DRAWN HEATH	6/25/2022
PART # PHD3-12	
ASM #	
COMMENTS:	
HYDRA-PHD ASSEMBLY	

P.O. BOX 248,
 SABETHA, KS 66534

TRIPLE C
 INC.

SIZE	DWG. NO.	REV.
A	60-0102 G	G
SCALE: 1:7	WEIGHT: 91.55	SHEET 1 OF 1